

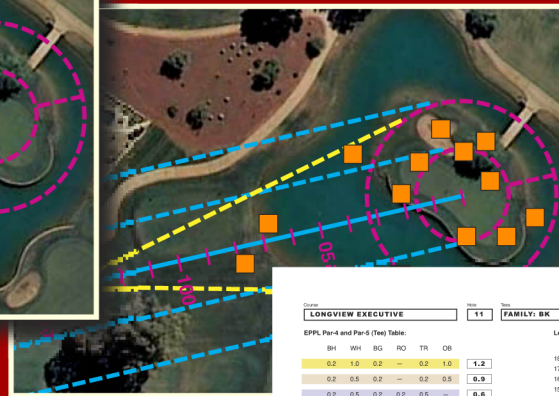
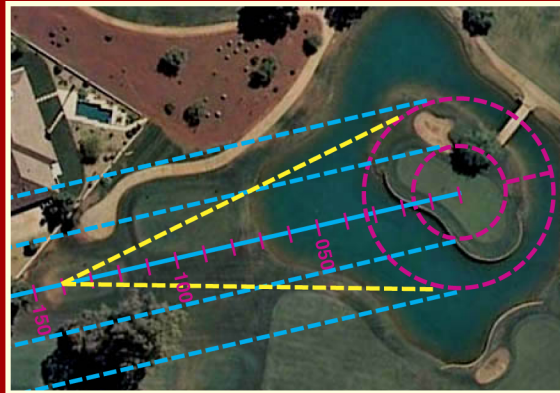
1 Course requests an EPPL Evaluation



2 EPPL Reviews GIS and mapping data for the facility



3 EPPL Collects ancillary data, such as green speeds, weather, elevation above sea level, etc.



4 Each golf hole is evaluated for more than 60 data fields that yield markers weighted to shot value and accuracy



Course	Hole	Type	Date of Photo
LONGVIEW EXECUTIVE	11	FAMILY: BK	6/2010

EPPL Par-4 and Par-5 (Tee) Table:						Length Table:	
BH	WH	BG	RD	TR	OB		
0.2	1.0	0.2	—	0.2	1.0	1.2	> 200 95
0.2	0.5	0.2	—	0.2	0.5	0.9	180-199 94
0.2	0.5	0.2	0.2	0.5	—	0.6	160-179 93
0.5	1.0	0.5	0.5	0.5	—	2.0	150-159 91
0.5	1.0	0.5	0.5	0.5	—	2.0	140-149 90
0.5	1.0	0.5	0.5	0.5	—	2.0	130-139 89
Significant Taps:	1.0	0.0	—	—	—	0.0	120-129 88
Blind Conditions:	0.5	0.0	—	—	—	0.0	100-109 86
Length (200):	90	+	3.7	=	93.7	0.0	90-099 89
						0.0	90-079 90
						0.0	< 80 87

EPPL Par-3 (Tee), Par-4 and Par-5 (Approach) Table:						Length Table:	
BH	WH	BG	RD	TR	OB		
0.2	1.0	0.2	—	0.2	1.0	0.2	100 ft. Dia
0.2	0.5	0.2	—	0.2	0.5	0.2	
0.5	1.0	0.5	0.5	0.5	—	0.0	
0.5	1.0	0.2	—	0.2	1.0	1.0	
Significant Taps:	1.0	0.0	—	—	—	0.0	
Blind Conditions:	0.5	0.0	—	—	—	0.0	
Length (Table):	88	+	2.4	=	90.4	0.0	

EPPL Green Putts Table:		
Green Speed > 9	1.0	1.0
Green Opening < 30 ft.	1.0	1.0
Green Width < 40 ft.	0.5	0.0
Green Depth < 40 ft.	0.5	0.0
Slopes > 5%	0.5	0.5
Greenside BH, DG, TR < 10 ft.	0.5	0.5
Greenside WH < 10 ft.	1.0	0.0
180	+	5.0 = 183.0



5 The EPPL Course Equivalent is finalized